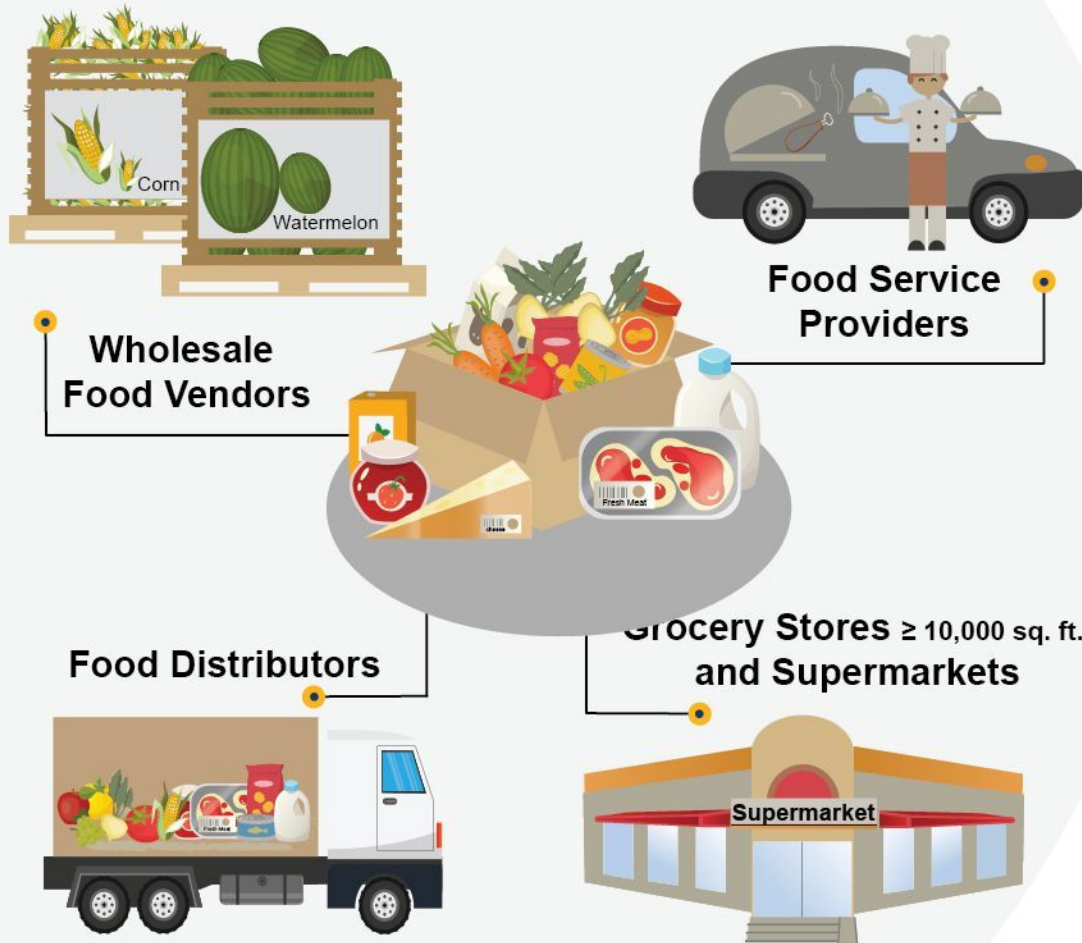


# Commercial Edible Food Generators

## Tier 1

January 1, 2022

Tier one businesses typically have more produce, fresh grocery, and shelf-stable foods to donate.



## Tier 2

January 1, 2024

Tier two businesses typically have more prepared foods to donate, which often require more careful handling to meet food safety requirements (e.g. time and temperature controls).

